

# NO CHALLENGE TOO TOUGH

**BOOM ARTICULATION**  
-20 TO 80°

OPTIMIZED AT  
-20 TO 20°  
DIGGING ANGLES

# 900 DIGGER DERRICK

UP TO  
**42,000 LB**

## A WHOLE LOT OF MUSCLES

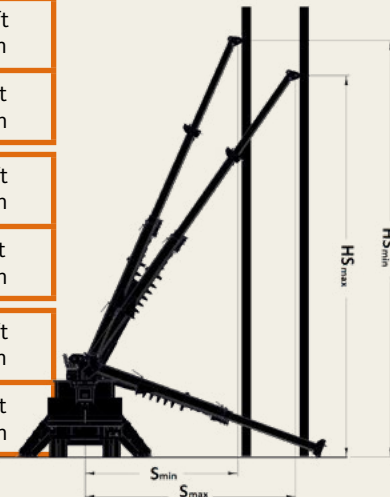
Once again, Posi+ goes beyond industry standards and presents a new generation of Digger Derricks. Completely reinvented to meet the high Posi+ design and quality standards.

- + STRENGTH**
- + SECURITY**
- + SAVINGS**

		MAX. CAPACITY	CAP. AT 10 FT. RADIUS	SHEAVE HEIGHT			LOAD RADIUS			HORIZONTAL REACH			DIGGING RADIUS	
				A1	A2	A3	R1	R2	R3	B1	B2	B3	S1	S2
900-48	TM WINCH	42,400 lb 19,232 kg	17,500 lb 7,938 kg	31.5 ft 9.6 m	40.4 ft 12.3 m	49.2 ft 15.0 m	3.8 ft 1.2 m	5.3 ft 1.6 m	6.9 ft 2.1 m	20.9 ft 6.4 m	29.9 ft 9.1 m	38.9 ft 11.9 m	18.7 ft 5.7 m	27.7 ft 8.4 m
	BOOM TIP WINCH	41,700 lb 18,915 kg	16,800 lb 7,620 kg	31.7 ft 9.7 m	40.6 ft 12.4 m	49.4 ft 15.1 m	3.8 ft 1.2 m	5.3 ft 1.6 m	6.9 ft 2.1 m	21.1 ft 6.4 m	30.1 ft 9.2 m	39.1 ft 11.9 m	18.7 ft 5.7 m	27.7 ft 8.4 m
900-50	TM WINCH	42,400 lb 19,232 kg	17,500 lb 7,938 kg	31.5 ft 9.6 m	41.4 ft 12.6 m	51.2 ft 15.6 m	3.8 ft 1.2 m	5.5 ft 1.7 m	7.2 ft 2.2 m	20.9 ft 6.4 m	30.9 ft 9.4 m	40.9 ft 12.5 m	18.7 ft 5.7 m	28.7 ft 8.8 m
	BOOM TIP WINCH	41,700 lb 18,915 kg	16,800 lb 7,620 kg	31.7 ft 9.7 m	41.5 ft 12.6 m	51.4 ft 15.7 m	3.8 ft 1.2 m	5.5 ft 1.7 m	7.3 ft 2.2 m	21.1 ft 6.4 m	31.1 ft 9.5 m	41.1 ft 12.5 m	18.7 ft 5.7 m	28.7 ft 8.7 m
900-52	TM WINCH	42,400 lb 19,232 kg	17,500 lb 7,938 kg	31.5 ft 9.6 m	42.3 ft 12.9 m	53.2 ft 16.2 m	3.8 ft 1.2 m	5.7 ft 1.7 m	7.6 ft 2.3 m	20.9 ft 6.4 m	31.9 ft 9.7 m	42.9 ft 13.1 m	18.7 ft 5.7 m	29.7 ft 9.1 m
	BOOM TIP WINCH	41,700 lb 18,915 kg	16,800 lb 7,620 kg	31.7 ft 9.7 m	42.5 ft 13.0 m	53.3 ft 16.2 m	3.8 ft 1.2 m	5.7 ft 1.7 m	7.6 ft 2.3 m	21.1 ft 6.4 m	32.1 ft 9.8 m	43.1 ft 13.1 m	18.7 ft 5.7 m	29.7 ft 9.1 m
900-55	TM WINCH	36,600 lb 16,602 kg	17,200 lb 7,802 kg	34.5 ft 10.5 m	45.3 ft 13.8 m	56.1 ft 17.1 m	4.3 ft 1.3 m	6.2 ft 1.9 m	8.1 ft 2.5 m	23.9 ft 7.3 m	34.9 ft 10.6 m	45.9 ft 14.0 m	21.7 ft 6.6 m	32.7 ft 10.0 m
	BOOM TIP WINCH	35,900 lb 16,284 kg	15,800 lb 7,167 kg	34.6 ft 10.5 m	45.5 ft 13.9 m	56.3 ft 17.2 m	4.3 ft 1.3 m	6.3 ft 1.9 m	8.2 ft 2.5 m	24.1 ft 7.3 m	35.1 ft 10.7 m	46.1 ft 14.1 m	21.7 ft 6.6 m	32.7 ft 10.0 m

✓ Patented climate control system No US 9,403,434 B2 | Patented securable pole tilt No US 9,267,307 B2 | Patented spider outriggers No US 8,944,466 B2

		MINIMUM RADIUS (S <sub>MIN</sub> )	MAX. RADIUS (S <sub>MAX</sub> )	CAPACITY AT MINIMUM RADIUS (S <sub>MIN</sub> ) -20° TO MAX HEIGHT	CAPACITY AT MAXIMUM RADIUS (S <sub>MAX</sub> ) -20° TO MAX HEIGHT	SHEAVE HEIGHT AT MINIMUM RADIUS (H <sub>S<sub>MIN</sub></sub> )	SHEAVE HEIGHT AT MAXIMUM RADIUS (H <sub>S<sub>MAX</sub></sub> )
900-48	TM WINCH	18.7 ft 5.7 m	27.2 ft 8.3 m	7,100 lb 3,221 kg	4,800 lb 2,177 kg	44.8 ft 13.7 m	38.5 ft 11.7 m
	BOOM TIP WINCH	18.7 ft 5.7 m	27.2 ft 8.3 m	6,800 lb 3,084 kg	4,500 lb 2,041 kg	45.0 ft 13.7 m	38.7 ft 11.8 m
900-50	TM WINCH	18.7 ft 5.7 m	28.1 ft 8.6 m	6,800 lb 3,084 kg	4,400 lb 1,996 kg	47.0 ft 14.3 m	40.4 ft 12.3 m
	BOOM TIP WINCH	18.7 ft 5.7 m	28.1 ft 8.6 m	6,400 lb 2,903 kg	4,050 lb 1,837 kg	47.2 ft 14.4 m	40.6 ft 12.4 m
900-52	TM WINCH	18.7 ft 5.7 m	29.0 ft 8.8 m	6,450 lb 2,926 kg	4,000 lb 1,814 kg	49.3 ft 15.0 m	42.3 ft 12.9 m
	BOOM TIP WINCH	18.7 ft 5.7 m	29.0 ft 8.8 m	6,150 lb 2,790 kg	3,650 lb 1,656 kg	49.5 ft 15.1 m	42.5 ft 13.0 m
900-55	TM WINCH	21.7 ft 6.6 m	32.0 ft 9.8 m	5,600 lb 2,540 kg	3,600 lb 1,633 kg	51.1 ft 15.6 m	43.6 ft 13.3 m
	BOOM TIP WINCH	21.7 ft 6.6 m	32.0 ft 9.8 m	5,200 lb 2,359 kg	3,200 lb 1,452 kg	51.3 ft 15.6 m	43.8 ft 13.4 m



## STANDARD EQUIPMENT

- + 3-STAGE TELESCOPIC BOOM
- + FIBERGLASS UPPER BOOM
- + INSULATING PER ANSI "46 KV AND BELOW"
- + CONTINUOUS ROTATION
- + PLANETARY ROTATION REDUCER
- + BOOM OUTRIGGERS INTERLOCK SYSTEM
- + REAR TAILSHELF CONTROL PANEL
- + FULL PRESSURE OPEN CENTER HYDRAULIC CONTROLS
- + 50-GALLON OIL RESERVOIR
- + SUCTION, RETURN AND HIGH PRESSURE OIL FILTERS
- + BOOM STOW PROTECTION
- + MEETS OR EXCEEDS ANSI A10.31

The information and specifications contained in this document are for indication purposes only; as such they may vary over the time.

\* Patent No US 9,267,307 B2 | \*\* Patent No US 8,944,466 B2

## OPTIONS AVAILABLE

- + DIGGER DRIVE 2-SPEED "SHIFT ON THE FLY"
- + TRANSFERABLE POLE FLANGE
- + POLE GUIDE WITH SECURABLE POLE TILT\*
- + HOSE REEL
- + TOOL OUTLETS
- + VARIOUS AUGERS AND EXTENSION SHAFT
- + POLE PULLER, TAMPER
- + REMOVABLE WORK PLATFORM
- + RADIO REMOTE CONTROLS
- + DYNAMIC LOADING INDICATOR (WITH OVERLOAD PROTECTION)
- + ACTIVE STABILITY CONTROL
- + RIDING SEAT AND CONTROLS
- + CORNER MOUNT
- + WIDE VARIETY OF OUTRIGGERS, INCLUDING A-FRAME OUTRIGGERS AND SPIDER OUTRIGGERS\*\*
- + WINCH AT TURRET
- + WINCH AT BOOM TIP
- + EMERGENCY PUMP
- + UPPER JIB
- + CAPSTAN DRIVE
- + FOOT PEDAL CONTROL

