

# NO CHALLENGE TOO TOUGH

**BOOM ARTICULATION  
-20 TO 80°**

OPTIMIZED AT  
-20 TO 20°  
DIGGING ANGLES

# 300 DIGGER DERRICK

UP TO  
**31,000 LB**

## A WHOLE LOT OF MUSCLES

Once again, Posi + goes beyond industry standards and presents a new generation of Digger Derricks. Completely reinvented to meet the high Posi+ design and quality standards.

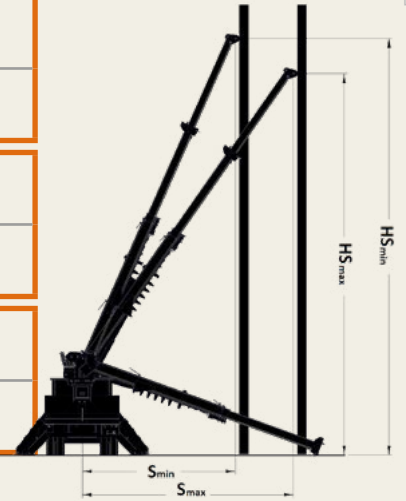
- + STRENGTH**
- + SECURITY**
- + SAVINGS**

		MAXIMUM CAPACITY	CAPACITY AT 10 FT RADIUS	SHEAVE HEIGHT			LOAD RADIUS			HORIZONTAL REACH			DIGGING RADIUS	
				A1	A2	A3	R1	R2	R3	B1	B2	B3	S1	S2
<b>300-45</b>	<b>TM WINCH</b>	30,800 lb 13,971 kg	13,400 lb 6,078 kg	27.6 ft 8.4 m	36.5 ft 11.1 m	45.3 ft 13.8 m	4.5 ft 1.4 m	6.0 ft 1.8 m	7.6 ft 2.3 m	17.5 ft 5.3 m	26.5 ft 8.1 m	35.5 ft 10.8 m	15.0 ft 4.6 m	24.0 ft 7.3 m
	<b>BOOM TIP WINCH</b>	23,100 lb 10,478 kg	12,100 lb 5,489 kg	27.7 ft 8.4 m	36.6 ft 11.2 m	45.4 ft 13.8 m	5.0 ft 1.5 m	6.6 ft 2.0 m	8.1 ft 2.5 m	17.7 ft 5.4 m	26.7 ft 8.1 m	35.7 ft 10.9 m	15.0 ft 4.6 m	24.0 ft 7.3 m
<b>300-47</b>	<b>TM WINCH</b>	27,600 lb 12,519 kg	12,800 lb 5,806 kg	29.6 ft 9.0 m	38.5 ft 11.7 m	47.3 ft 14.4 m	4.8 ft 1.5 m	6.4 ft 2.0 m	8.0 ft 2.4 m	19.5 ft 5.9 m	28.5 ft 8.7 m	37.5 ft 11.4 m	17.0 ft 5.2 m	26.0 ft 7.9 m
	<b>BOOM TIP WINCH</b>	21,200 lb 9,616 kg	11,400 lb 5,171 kg	29.7 ft 9.1 m	38.5 ft 11.7 m	47.4 ft 14.5 m	5.3 ft 1.6 m	6.9 ft 2.1 m	8.5 ft 2.6 m	19.7 ft 6.0 m	28.7 ft 8.8 m	37.7 ft 11.5 m	17.0 ft 5.2 m	26.0 ft 7.9 m
<b>300-50</b>	<b>TM WINCH</b>	27,500 lb 12,474 kg	12,800 lb 5,806 kg	29.6 ft 9.0 m	39.4 ft 12.0 m	49.3 ft 15.0 m	4.8 ft 1.5 m	6.6 ft 2.0 m	8.3 ft 2.5 m	19.5 ft 5.9 m	29.5 ft 9.0 m	39.5 ft 12.0 m	17.0 ft 5.2 m	27.0 ft 8.2 m
	<b>BOOM TIP WINCH</b>	21,200 lb 9,616 kg	11,400 lb 5,171 kg	29.7 ft 9.1 m	39.5 ft 12.0 m	49.4 ft 15.1 m	5.3 ft 1.6 m	7.1 ft 2.2 m	8.9 ft 2.7 m	19.7 ft 6.0 m	29.7 ft 9.1 m	39.7 ft 12.1 m	17.0 ft 5.2 m	27.0 ft 8.2 m

✓ Patented securable pole tilt No US 9,267,307 B2 | Patented spider outriggers No US 8,944,466 B2

		MINIMUM RADIUS (S <sub>MIN</sub> )	MAX. RADIUS (S <sub>MAX</sub> )	CAPACITY AT MINIMUM RADIUS (S <sub>MIN</sub> ) -20° TO MAX HEIGHT	CAPACITY AT MAXIMUM RADIUS (S <sub>MAX</sub> ) -20° TO MAX HEIGHT	SHEAVE HEIGHT AT MINIMUM RADIUS (H <sub>S<sub>MIN</sub></sub> )	SHEAVE HEIGHT AT MAXIMUM RADIUS (H <sub>S<sub>MIN</sub></sub> )
<b>300-45</b>	<b>TM WINCH</b>	15.0 ft 4.6 m	22.6 ft 6.9 m	7,000 lb 3,175 kg	4,400 lb 1,996 kg	42.9 ft 13.1 m	38.2 ft 11.6 m
	<b>BOOM TIP WINCH</b>	15.0 ft 4.6 m	22.6 ft 6.9 m	6,300 lb 2,858 kg	4,000 lb 1,814 kg	43.1 ft 13.1 m	38.3 ft 11.6 m
<b>300-47</b>	<b>TM WINCH</b>	17.0 ft 5.2 m	24.4 ft 7.4 m	6,500 lb 2,948 kg	4,350 lb 1,973 kg	44.1 ft 13.4 m	39.3 ft 12.0 m
	<b>BOOM TIP WINCH</b>	17.0 ft 5.2 m	24.4 ft 7.4 m	5,850 lb 2,654 kg	3,900 lb 1,769 kg	44.3 ft 13.5 m	39.5 ft 12.0 m
<b>300-50</b>	<b>TM WINCH</b>	17.0 ft 5.2 m	25.4 ft 7.7 m	5,950 lb 2,699 kg	3,900 lb 1,769 kg	46.4 ft 14.1 m	41.0 ft 12.5 m
	<b>BOOM TIP WINCH</b>	17.0 ft 5.2 m	25.4 ft 7.7 m	5,600 lb 2,540 kg	3,550 lb 1,610 kg	46.6 ft 14.2 m	41.2 ft 12.6 m

**DIGGING + POLE-SETTING PERFORMANCE (-20 TO 80°)**



## STANDARD EQUIPMENT

- + 3-STAGE TELESCOPIC BOOM
- + FIBERGLASS UPPER BOOM
- + INSULATING PER ANSI "46 KV AND BELOW"
- + CONTINUOUS ROTATION
- + PLANETARY ROTATION REDUCER
- + BOOM OUTRIGGERS INTERLOCK SYSTEM
- + REAR TAILSHELF CONTROL PANEL
- + FULL PRESSURE OPEN CENTER HYDRAULIC CONTROLS
- + 50-GALLON OIL RESERVOIR
- + SUCTION AND RETURN OIL FILTERS
- + BOOM STOW PROTECTION
- + MEETS OR EXCEEDS ANSI A10.31

## OPTIONS AVAILABLE

- + DIGGER DRIVE 2-SPEED "SHIFT ON THE FLY"
- + TRANSFERABLE POLE FLANGE
- + POLE GUIDE WITH SECURABLE POLE TILT\*
- + HOSE REEL
- + TOOL OUTLETS
- + VARIOUS AUGERS AND EXTENSION SHAFT
- + POLE PULLER, TAMPER
- + REMOVABLE WORK PLATFORM
- + RADIO REMOTE CONTROLS
- + RIDING SEAT AND CONTROLS
- + CORNER MOUNT
- + WIDE VARIETY OF OUTRIGGERS, INCLUDING SPIDER OUTRIGGERS\*\*
- + WINCH AT TURRET
- + WINCH AT BOOM TIP

*The information and specifications contained in this document are for indication purposes only; as such they may vary over the time.*

\*Patent No US 9,267,307 B2

\*\*Patent No US 8,944,466 B2

